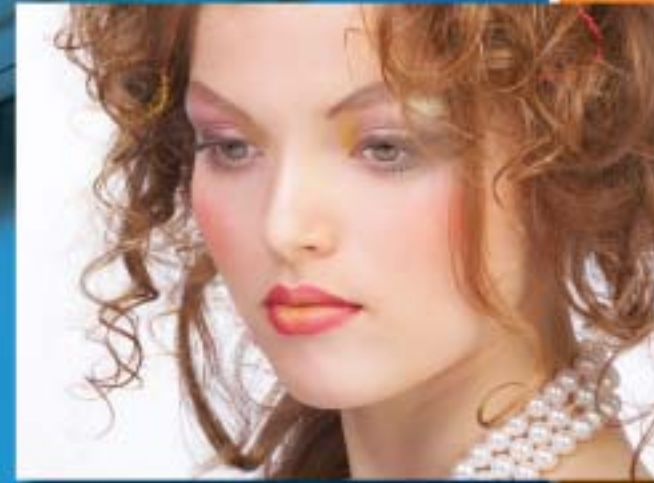


It's your time.

Why not make the most of it?



ATTENDANCE

The hands free high speed omni-directional scanner reads bar codes on the first try.

Define time clock rules:

How many minutes a student can be late and still get credit.

Track time by the minute or round to the nearest quarter hour.

Allows automatic deductions for breaks and lunches.

POINT-OF-SALE

Replaces the need for your hardware cash register

Integrated with Inventory and appointment scheduling

Cash reconciliation reports

Prints Receipts and tracks gift certificates

Tracks client history including chemical formulas

CLINICAL SKILLS

Track Student clinical skill competencies at your PC or on-the-go with your PDA handheld device.

Customizable to help meet your state's requirements.

Print customized clinical progress reports.

Enter your list of required skills and service and price list.

STUDENT DATA

Retains detailed student demographic information such as personal information, prior college education, placement info and emergency contact information.

Tracks currently enrolled, graduates and withdrawals.

Several layers of security to prevent unauthorized use or access.

View our online presentation at our website: www.americassoftware.com
Or call us for a free live web demo today! 800-467-1170

Discovery Pro Beauty School Management Software

2009 Edition *Vista Compatible*



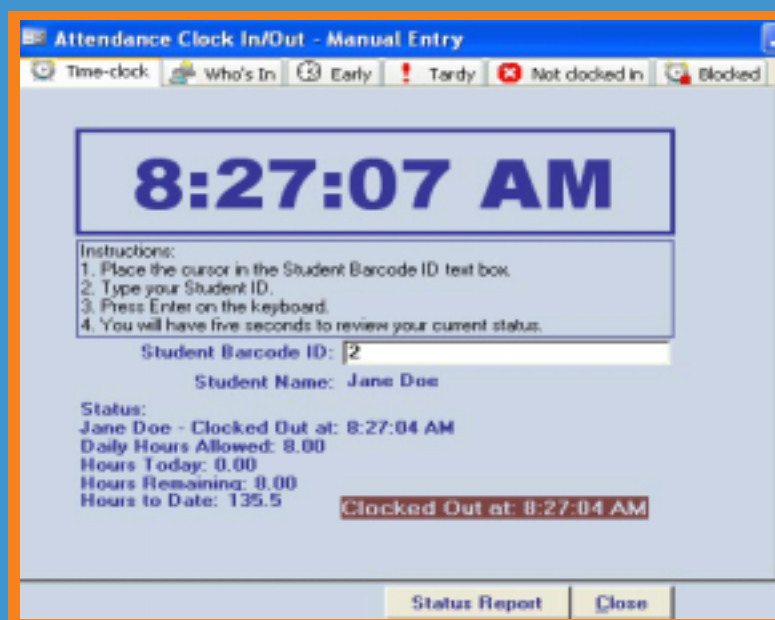
features that Revolutionize

>> MAIN MENU

- ✓ Discovery Pro Cosmetology School Management Software is an integrated student record management system designed for beauty programs.
- ✓ Tracks and stores unlimited student records in a single database using Microsoft technology.
- ✓ Several layers of security will protect your data from unauthorized access.
- ✓ Includes attendance, clinical skills, gradebook, appointment scheduling, cash register, inventory and client record-keeping.
- ✓ Compatible with Microsoft XP and Vista operating systems. Discovery Pro is Networkable.



>> PC TIME CLOCK



- ✓ Our software based time clock reduces time clock fraud by requiring students to clock in and out with a barcoded identification badge of your choosing.
- ✓ Tracks time by the minute or by the 1/4 hour method.
- ✓ Allows you to setup time clock rules to fit your school's needs such as the maximum hours a student is allowed per day, auto deduct lunches and breaks, automatically block students after a set time, mark students tardy after a set time.
- ✓ Includes an instructor dashboard that shows you who's in, who's tardy, absent or blocked out, all with a click of your mouse.

Optimize

the way you work

>> CLINICAL SKILL TRACKING USING YOUR PC OR HANDHELD DEVICE

Summarized Progress Report

01/01/2004 and 07/01/2005

Student #: 2 Name: Jackson, Janet M Charges: \$1,600.00 Balance: \$1,250.00
Hrs. To Date: 656.00

Performance Name	Practical Completions			Practical Hours	
	Minimum Req.	Completed	Remaining	Minimum Req.	Completed
Artificial Hair	3	12	0	14	0
Artificial Nails (sets)	30	29	1	25	3
Blowdry Style with Brush	50	179	0	60	43
Blowdry/Marcel Style	100	18	82	60	13
Chemical Reformation	50	3	47	20	0
Facials w/massage/makeup	40	4	36	10	5.5
Fullhead Fingerwave/Style	10	15	0	25	21
Fullhead Pin curl/Style	10	26	0	25	4
Hair Lightening/Highlighting	24	17	7	25	4
Hair Removal	20	0	20	60	0
Haircuts	150	6	144	40	0
Lash & Brow Tinting	10	0	10	5	0
Manicure w/arm & hand massage	20	0	20	5	0

- ✓ Track student clinical skill completions at your PC or using your PDA hand-held device.
- ✓ Print flexible progress reports that use your list of skills.
- ✓ Tracks and prints the number of completions or clock hours completed.
- ✓ Discovery Pro also includes a traditional classroom grade book with transcript printing options.

>> STUDENT PROGRESS REPORTS

- ✓ Attendance reports - tracks time clock punches, field trip hours and tardies.
- ✓ Calculate and print status report showing hours to date, scheduled graduation date and % of attendance completed.
- ✓ Who's In report shows students who are clocked in right now and includes the time clock punch.
- ✓ Print a transcript that includes GPA, attendance %, theory and practical completion grades and averages.

800-467-1170
Call for live demo!

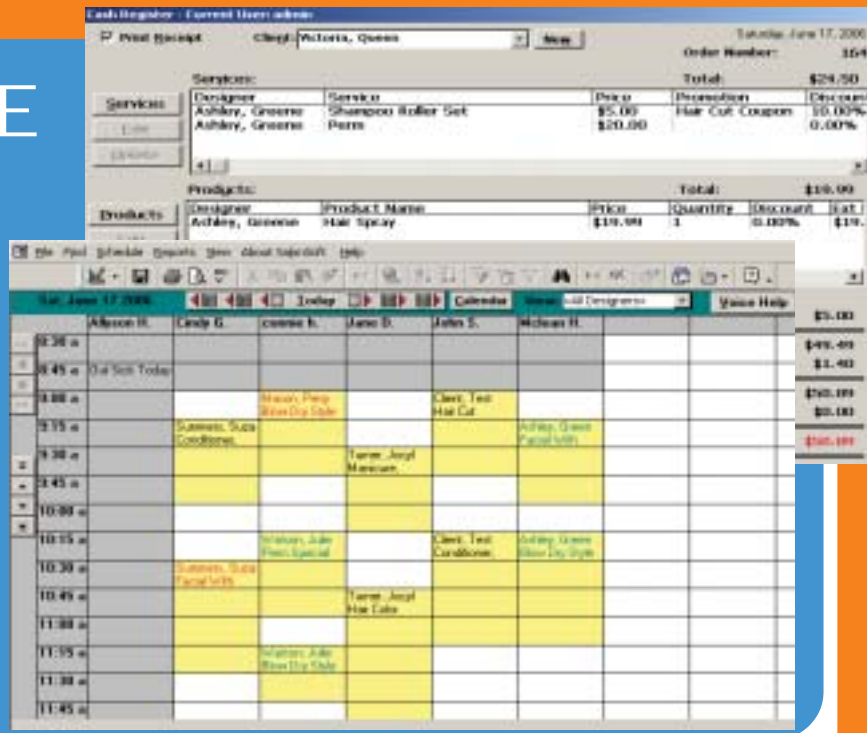
The screenshot shows a window titled "Student Reports" with the following sections:

- Criteria:** Beginning Date (05/01/2004), Ending Date (06/02/2005), Program (ALL), Student (Jane Doe).
- Enrollment:** Currently Enrolled, Withdraws, Graduated, Transcript.
- Theory:** Theory Grades - Weighted, Theory Grades - Non-weighted.
- Attendance:** Attendance - Detail, Attendance - Condensed, Attendance - Summary, Attendance - Detail with Clock-punches, Attendance - Detail w/o Recap, Attendance - Summary Extended, Attendance - Missed Hours, Attendance - Monthly Status, Attendance - Who's In.
- Performance:** Practical Performances, Practical Performances - No Mannequin.

Buttons for "Print", "Previous", and "Close" are visible at the bottom right.

>> POINT OF SALE

- ✓ Features a point and click appointment scheduler that allows unlimited student operators.
- ✓ Includes a software based cash register and a full-featured product inventory system.
- ✓ Prints receipts, end of day sales reports and maintains client history records including chemical formulas used.
- ✓ Uses built-in barcodes and hand-held canner to speed up client check out and ensure automatic removal of products from inventory.



800-467-1170
 866-302-3905 - fax
www.americassoftware.com
 Call today for free live demo!

Pricing & System Requirements

- \$ 2495.00 Discovery Pro Professional – Includes all features - Requires Windows Vista or XP
- \$ 1995.00 Discovery Pro Standard – Does not include Point of Sale Software
- \$ 399.00 Annual renewal & technical support for 1 year; or
- \$ 995.00 Technical Support for 3 Years (Save \$202.00!)

Optional Equipment

- \$ 399.00 Electronic Cash Drawer - Requires Serial Port
- \$ 499.00 Omni Multi-Directional Time Clock Scanner - Requires USB Port
- \$ 269.00 Card Reader Time Clock Scanner- Requires USB Port
- \$ 595.00 Pocket PC Software - Requires Hand Held device running Windows Mobile OS

ASC
 188 Ponderosa Circle
 Mooresville, NC 28117
 800-467-1170

>> BEAUTY SCHOOL SOFTWARE

